

L'ANTICA VIA APPIA

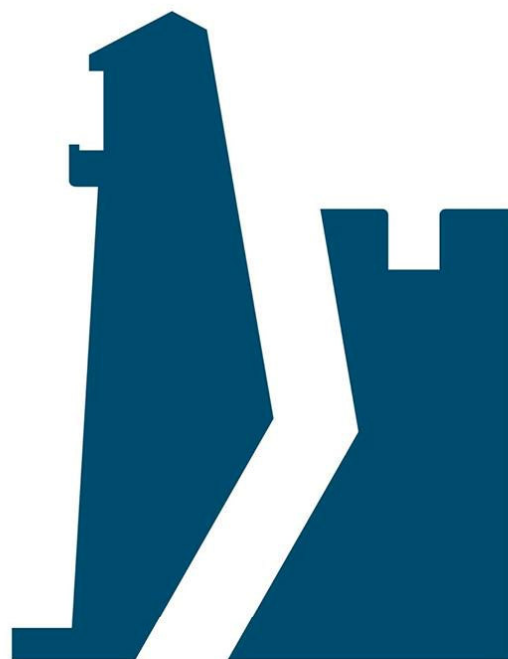
I CAMMINI CULTURALI PER LA VALORIZZAZIONE DEL PAESAGGIO

PROF. ARCH. NICOLA MARTINELLI
POLITECNICO DI BARI DIPARTIMENTO ICAR,
PRESIDENTE URBAN@IT E MEMBRO DEL CONSIGLIO SUPERIORE PER I BENI CULTURALI E PAESAGISTICI DEL MIC



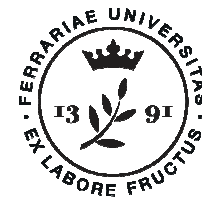
UNIVERSITÀ
POLITECNICA
DELLE MARCHE





CAMMINO DEI FARI ITALIANI

National Research Network
for the Route of Italian lighthouses





IL CAMMINO DEI FARI ITALIANI

*The Route of
Italian Lighthouses*

Lighthouse Route

from Santiago to Finisterre



<https://www.verde-natura.it/viaggio/il-cammino-dei-fari-da-santiago-a-finisterra/>

Sustainable valoriation and preservation of the natural and architectural heritage, lighthouses and coastal towers, through the design of **Cultural and Integrated Route**.

High functional complementarity between territories and coastal heritage which will be represented as a dense **Network** of nodes (lighthouses and towers) and infrastructures (multimodal connections and existing routes).

Development of a sustainable model to:

- ✦ reconvert and develop the unknown coastal heritage;
- ✦ connect the cross-border architectural and natural heritage of the coastal heritage, through an integrated **Route**;
- ✦ valorize and preserve the landscape for sustainable tourism.

Lighthouse Route

from Santiago to Finisterre



A transnational approach is important, based on a historicized culture of the sea and the integration of organizations operating in the territories for increasing their competitiveness.

Moreover, a strategic integration among the elements aims to develop and strengthen the touristic offer for the requalification of tangible and intangible assets.

The goal is to promote a territorial and ecosystemic approach to the protection and enhancement of natural and cultural resources of the coastal areas.

<https://www.verde-natura.it/viaggio/il-cammino-dei-fari-da-santiago-a-finisterre/>

“Valore Paese - Cammini e Percorsi”

Agenzia del Demanio



Identification of the lighthouses and coastal tower **Route**, currently organized as isolated assets with ordinary function. Their reconversion will be made according to the context analysis and the local identity.

It is strategic the multi-dimensional reading of the interrelated resources as the system of historical-cultural values, economic, social and symbolic that qualify the identity of the territories within which the lighthouses/tower are placed.

Identification and storage in an Information System of the physical, legal, territorial and landscape aspects of the cultural heritage and **Multimodal Routes**.

Definition and design of a shared vision of a **new European Route** as multimodal integrated infrastructure connected with major international and local infrastructures.

http://www.beniculturali.it/mibac/export/MiBAC/sito-MiBAC/Contenuti/visualizza_asset.html_267604239.html

Capo Zafferano Lighthouse



In Sicily the Lighthouse of Capo Zafferano will become a multifunctional structure such as the Punta del Pero Pavilion in Syracuse and the Formiche Lighthouse (Gr), a place of welcome and catering, with rooms dedicated to scientific-naturalistic educational activities.

The nodes consist of lighthouses and coastal tower, which for their high topographic diversity, architectural, historical lend themselves more than others to:

1. Hosting a reception function social mixité: restaurant, museums and scientific research;
2. redevelop and enhance an inestimable and environmental monumental heritage in a cross-border cooperation view;
3. organize Itinerary able to highlight local identities and secular cultural exchanges between different territories.

<http://www.lasicilia.it/news/home/87780/con-11-mln-di-euro-anche-in-sicilia-rivivono-fari-e-strutture-storiche.html>



IL CAMMINO DEI FARI ITALIANI:

11 criteri

Route of Italian Lighthouse :

11 criteria

PRESENZA DI SEGNALETICA ORIZZONTALE E/O VERTICALE PER OGNI TAPPA

*Presence of Horizontal and/or Vertical
Signs for every stage*



**PERCORSO FRUIBILE IN
SICUREZZA**
Safety Route

**PERCENTUALE DI STRADE
ASFALTATE NON SUPERIORE A
40%**
*Percentage of asphalted roads not
exceeding 40%*



TAPPE DOTATE DI TUTTI I SERVIZI DI SUPPORTO AL CAMMINATORE

*Stages equipped with all
services to support the walker*

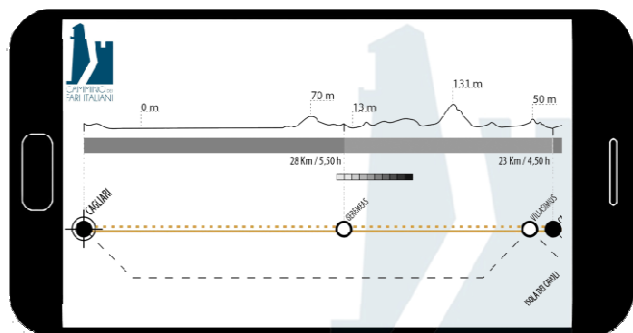


DESCRIZIONE ON LINE SUL SITO DI RIFERIMENTO DI OGNI TAPPA

*Online description on the
reference site of each stage*

SITO INTERNET DEL CAMMINO AGGIORNATO

Update WebSite



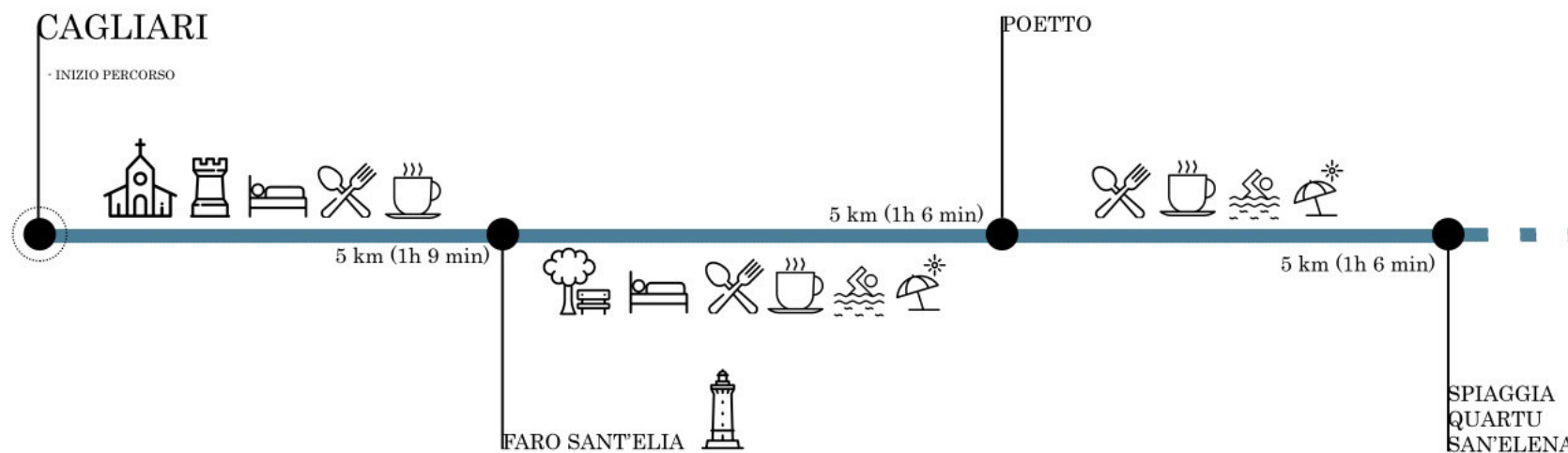
The screenshot shows the website interface for 'CAMMINO DEI FARI ITALIANI'. The header includes the logo, language options (IT, EN, SP), and navigation tabs: INFORMAZIONI, GALLERIA, SERVIZI, and CONTATTI. A search bar with the text 'Cerca..' and a magnifying glass icon is present. Below the navigation is a 'MENU' icon and social media links for Twitter, Facebook, and Instagram, with the text 'Seguici su:'. The main content area features a map of the route with a legend titled 'Seleziona un cammino:' containing three options: 1 Arbatax - Cagliari, 2 Cagliari - S. Antioco, and 3 S. Antioco - Oristano. The map shows the route with red stars and yellow circles. A QR code is located in the bottom right corner. At the bottom, it says 'AGGIORNAMENTO AL: 13/04/2018' and 'GEOREFERENZIAZIONE'. In the bottom right corner, there is a button 'Scarica l'APP' with icons for the App Store and Google Play.

SERVIZI DI ALLOGGIO E RISTORAZIONE ENTRO 5km DAL CAMMINO

Accommodation and catering services within 5 km of the Route



Lighthouse Villa Korkyra, Croazia



PRESENZA DI UN ORGANO DI GOVERNO DEL CAMMINO

*Presence of a governing
institution of the Route*

GARANTIRE LA VIGILANZA E LA MANUTENZIONE DEL PERCORSO

*Ensure vigilance and
maintenance of the Route*



Trinity House

Serving the mariner since 1514

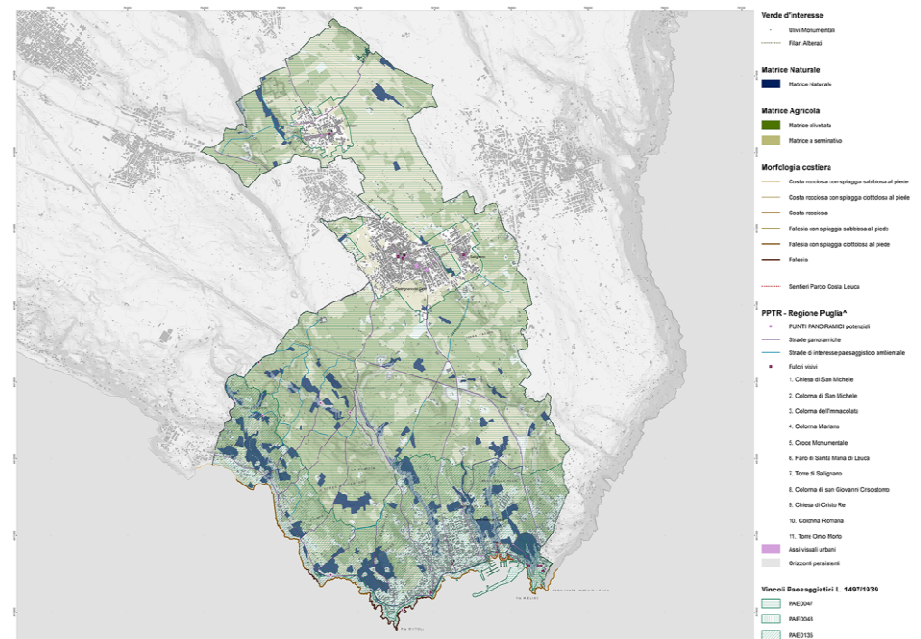
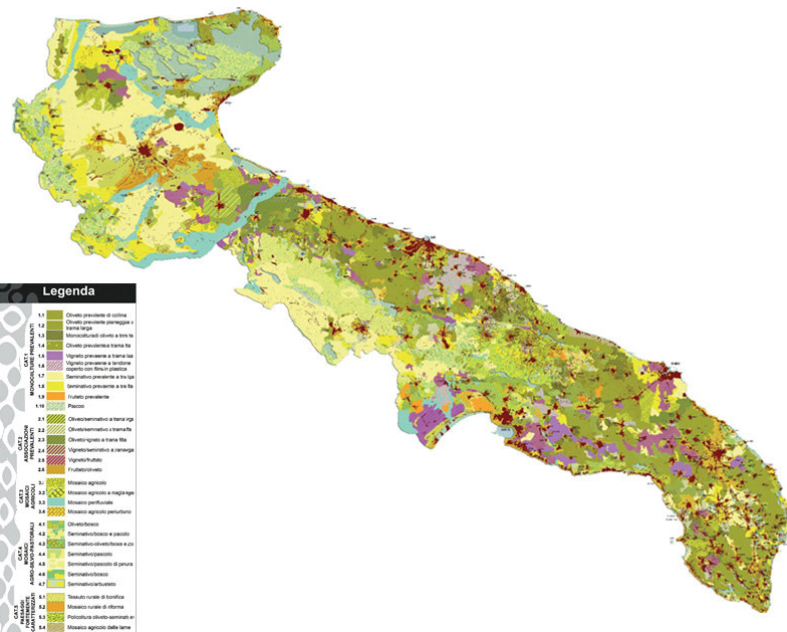
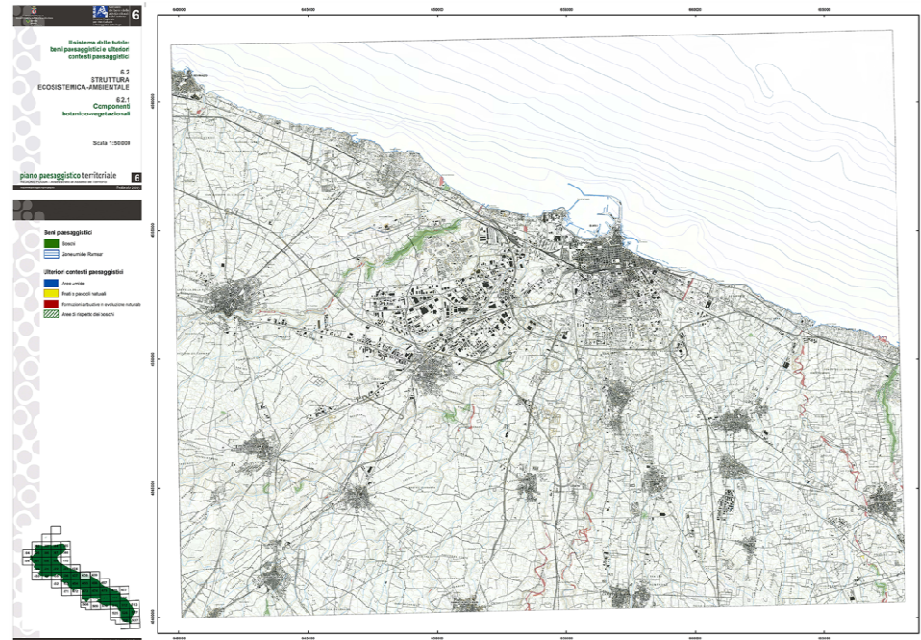
Trinity House is a charity dedicated to safeguarding shipping and seafarers, providing education, support and welfare to the seafaring community with a statutory duty as a General Lighthouse Authority to deliver a reliable, efficient and cost-effective aids to navigation service for the benefit and safety of all mariners.

GOVERNANCE

As defined by our Royal Charter, Trinity House is governed by the Master, Wardens and Assistants with support from a broad maritime fraternity



GEOREFERENZIAZIONE DEL PERCORSO *Geolocal Route*





3 Experiments

ADRIATIC LIGHTHOUSES ROUTE

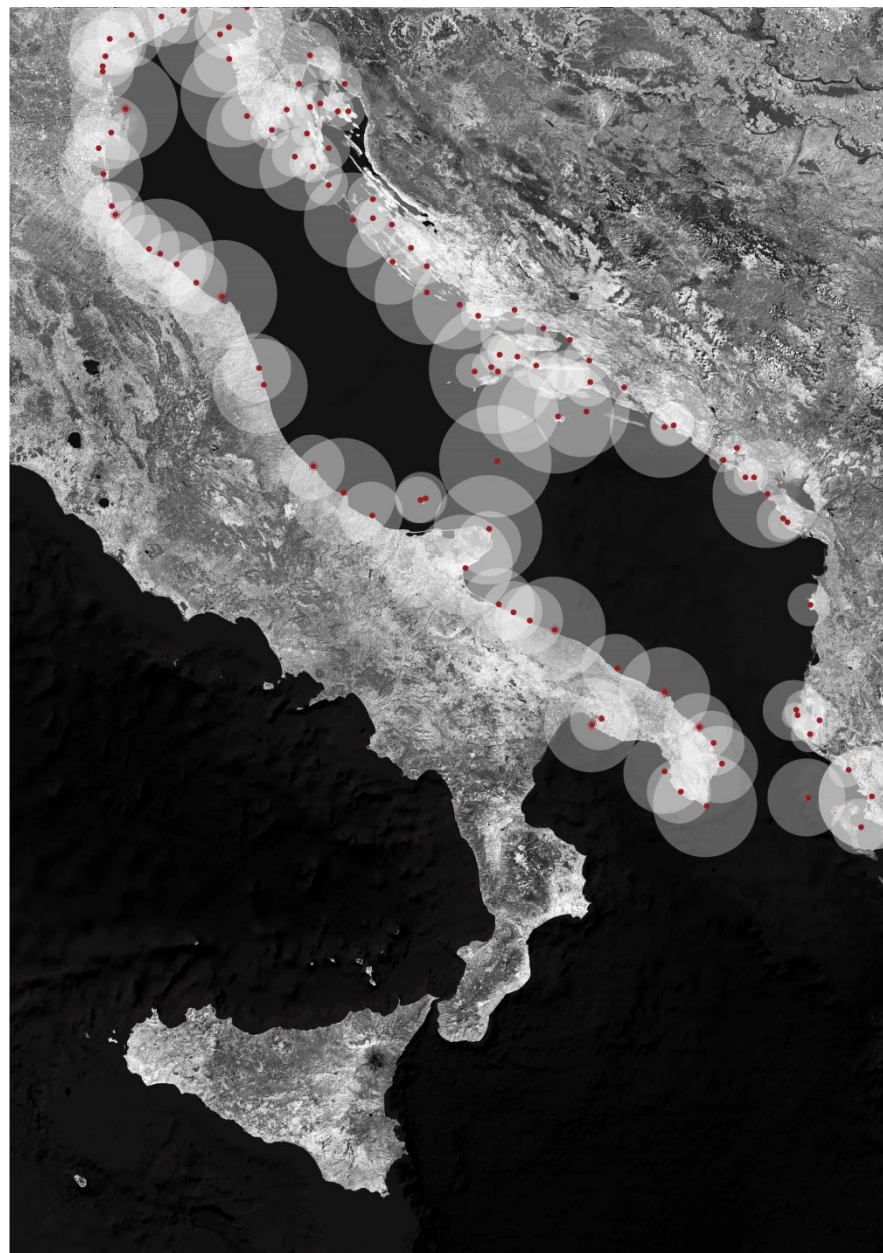
Graduate Workshop I - January 2017

Relatore: **Michele Montemurro**

Correlatori: **Nicola Martinelli
Anna Bruna Menghini
Gabriele Rossi**

Tutor: **Giuseppe Carlone
Enrica Simonetti**

Studenti: **Adriano Innamorato
Claudio Masciopinto
Stella Mastrolonardo
Adriana Montenegro
Alessandra Ricci**



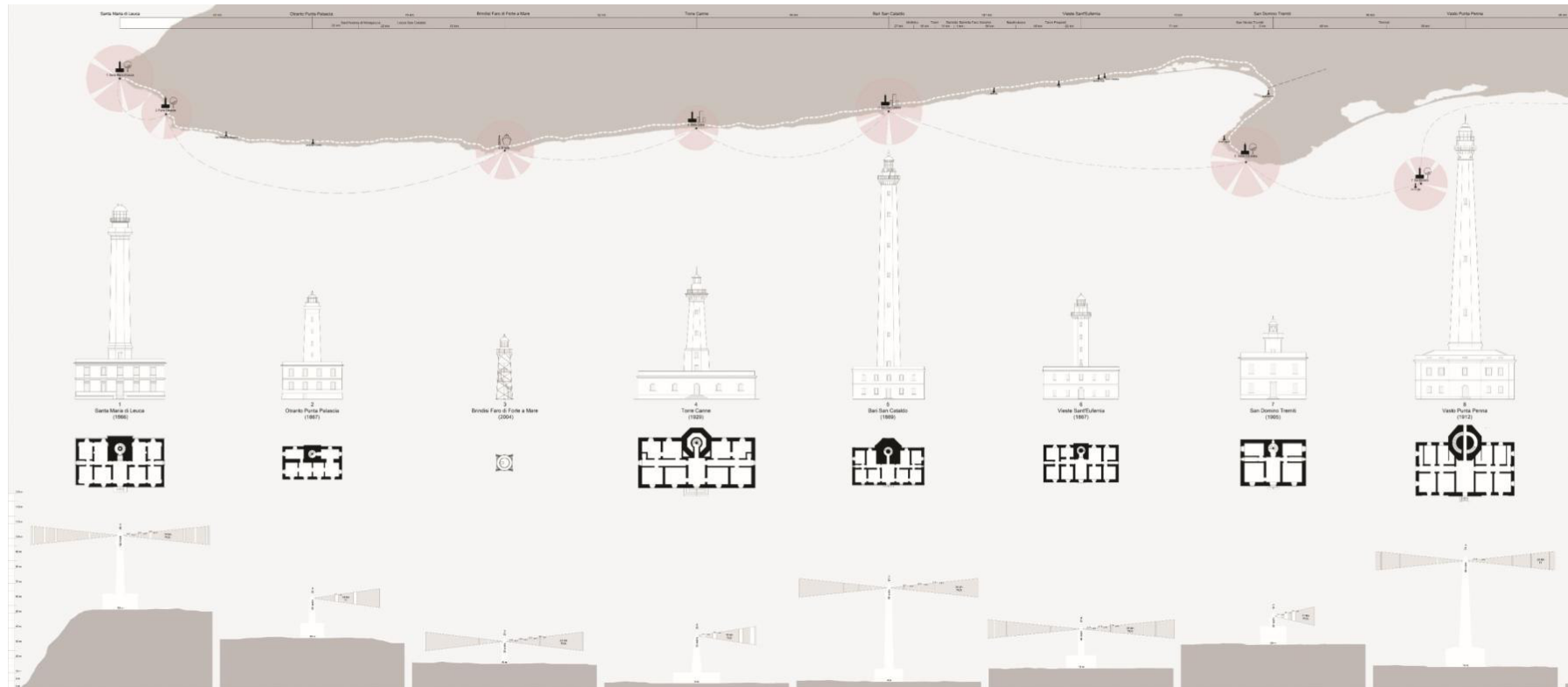
-  Contesto naturalistico
-  Contesto urbano
-  monumento o museo
-  castello
-  centro storico
-  chiesa o moschea
-  scavi archeologici
-  parco forestale
-  spiagge
-  spiagge attrezzate

- 1 Santa Maria di Leuca
- 2 Otranto - Punta Palascia
- 3 Brindisi - Forte a Mare
- 4 Torre Canne
- 5 Bari - San Cataldo
- 6 Vieste - Isola Sant'Eufemia
- 7 Tremiti - Isola San Domino
- 8 Vasto - Punta Penna
- 9 Ortona
- 10 Pedaso
- 11 Ancona - Faro Nuovo
- 12 Rimini
- 13 Po di Goro
- 14 Punta della Maestra
- 15 Rocchetta
- 16 Murano Venezia
- 17 Piave Vecchia
- 18 Punta Tagliamento
- 19 Trieste - Faro della Vittoria
- 20 Savudria
- 21 Sv. Ivan Na Pucini
- 22 Porer
- 23 Cape Vhetak
- 24 Miaka Fiume
- 25 Veli Rat
- 26 Prinsjak
- 27 Biltvenica
- 28 Pomorac Split
- 29 Sv. Petar
- 30 Sucuraj
- 31 Cape Struga Lastovo
- 32 Susac
- 33 Palagruza
- 34 Cliffs Grebeni Ragusa
- 35 Sveti Nikola
- 36 Mendra
- 37 Kep i Duresit
- 38 Kep i Treporteve
- 39 Saranda
- 40 Kerkyra - Capo Sideros



ADRIATIC LIGHTHOUSES ROUTE

Graduate Workshop I - January 2017



TIRRENIAN LIGHTHOUSES ROUTE

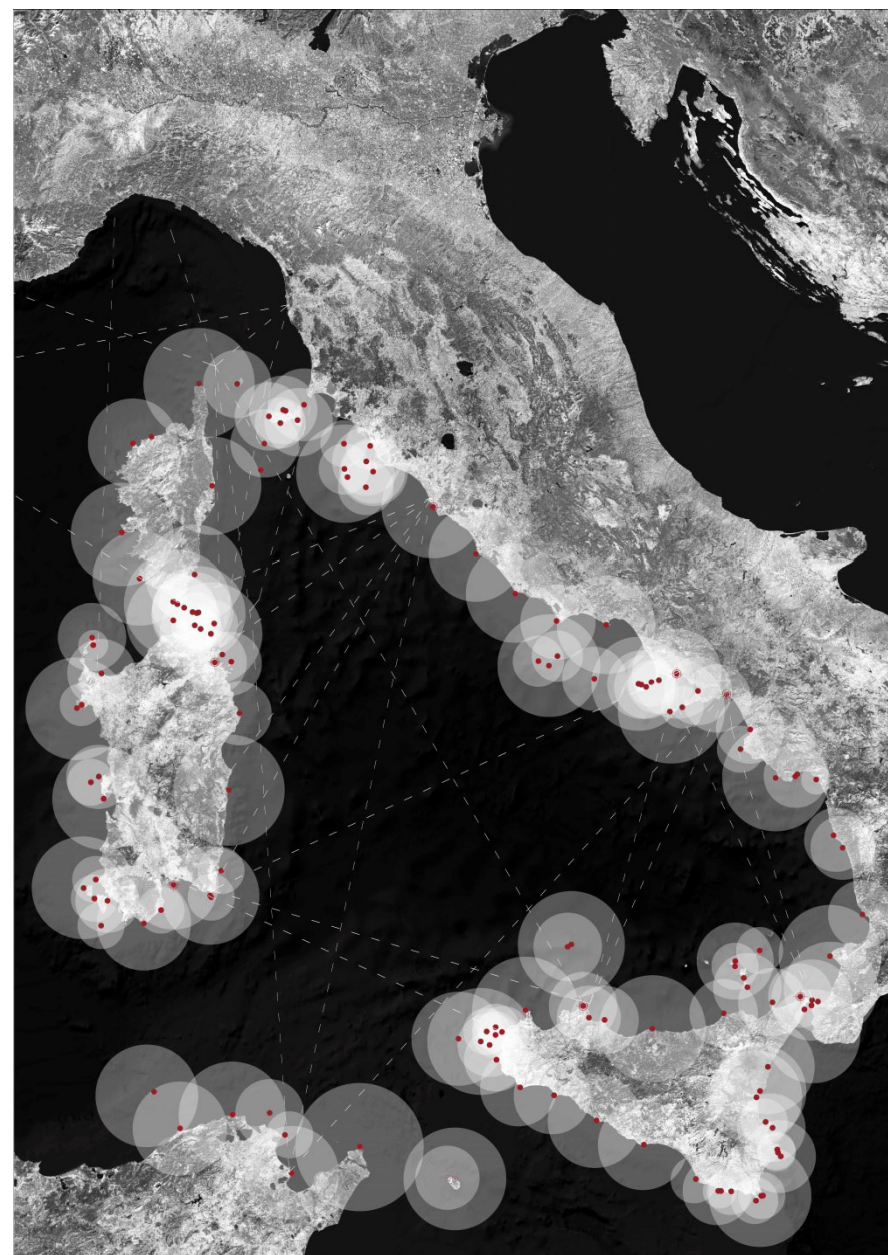
Graduate Workshop II - July 2017

Graduate Workshop III - March 2018

Relatore: Michele Montemurro

Correlatori: Nicola Martinelli
Gabriele Rossi

Studenti: Roberta De Giglio
Davide De Luca
Anna Dicarlo
Nicola La Vitola
Silvia Mannarelli
Luigi Santamaria
Pierfrancesco Acciani
Vincenzo Bruni
Claudia Delmedico
Giuliana Gianfrate
Claudia Lella
Anna Maria Seccia



TIRRENIAN LIGHTHOUSES ROUTE

Graduate Workshop II - July 2017

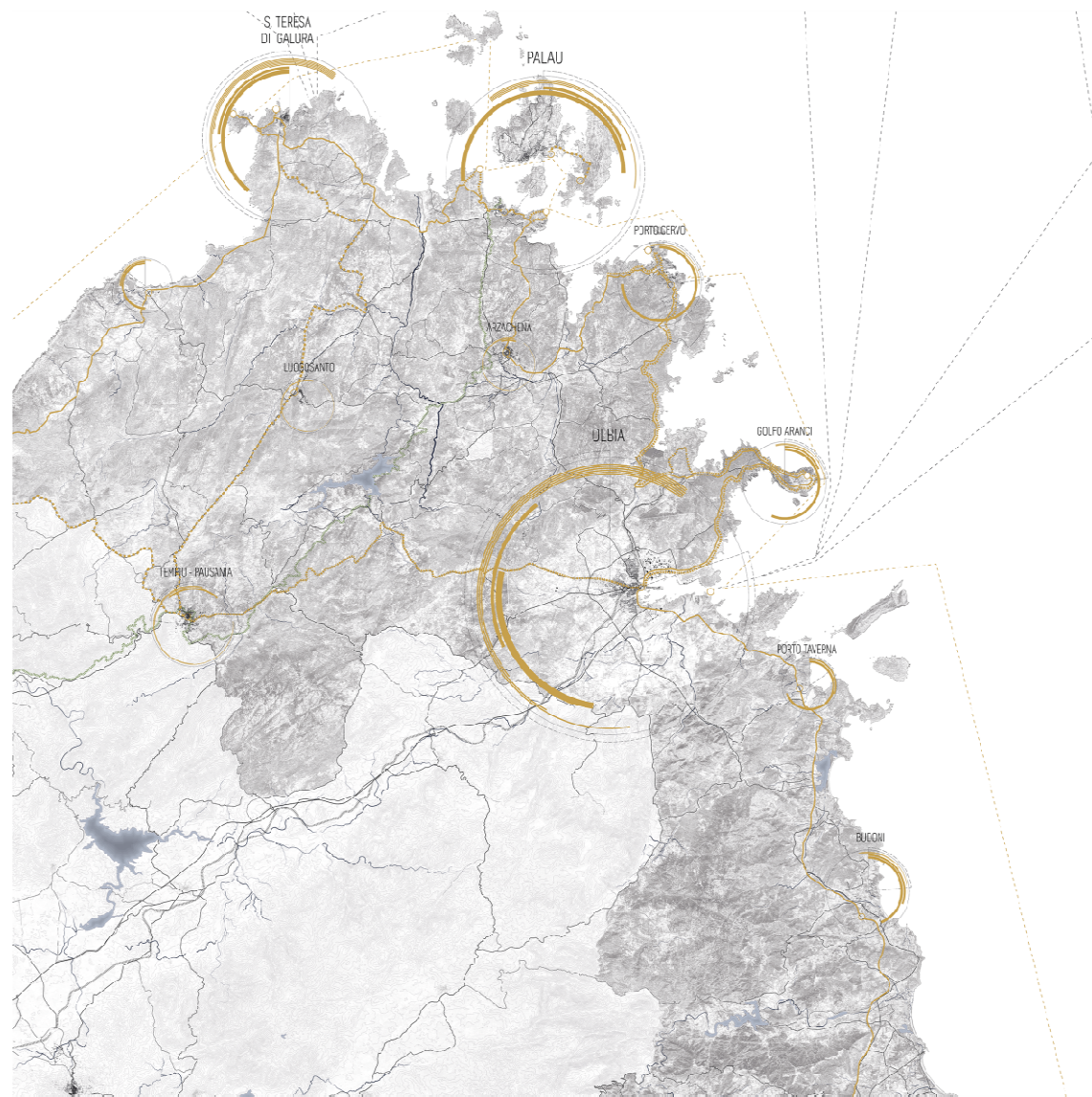
Sardinian - Routes



TIRRENIAN LIGHTHOUSES ROUTE

Graduate Workshop II - July 2017

Sardinian - Routes



TIRRENIAN LIGHTHOUSES ROUTE

Graduate Workshop II - July 2017

Sardinian - Routes



FANALE PUNTA PALAU - PALAU



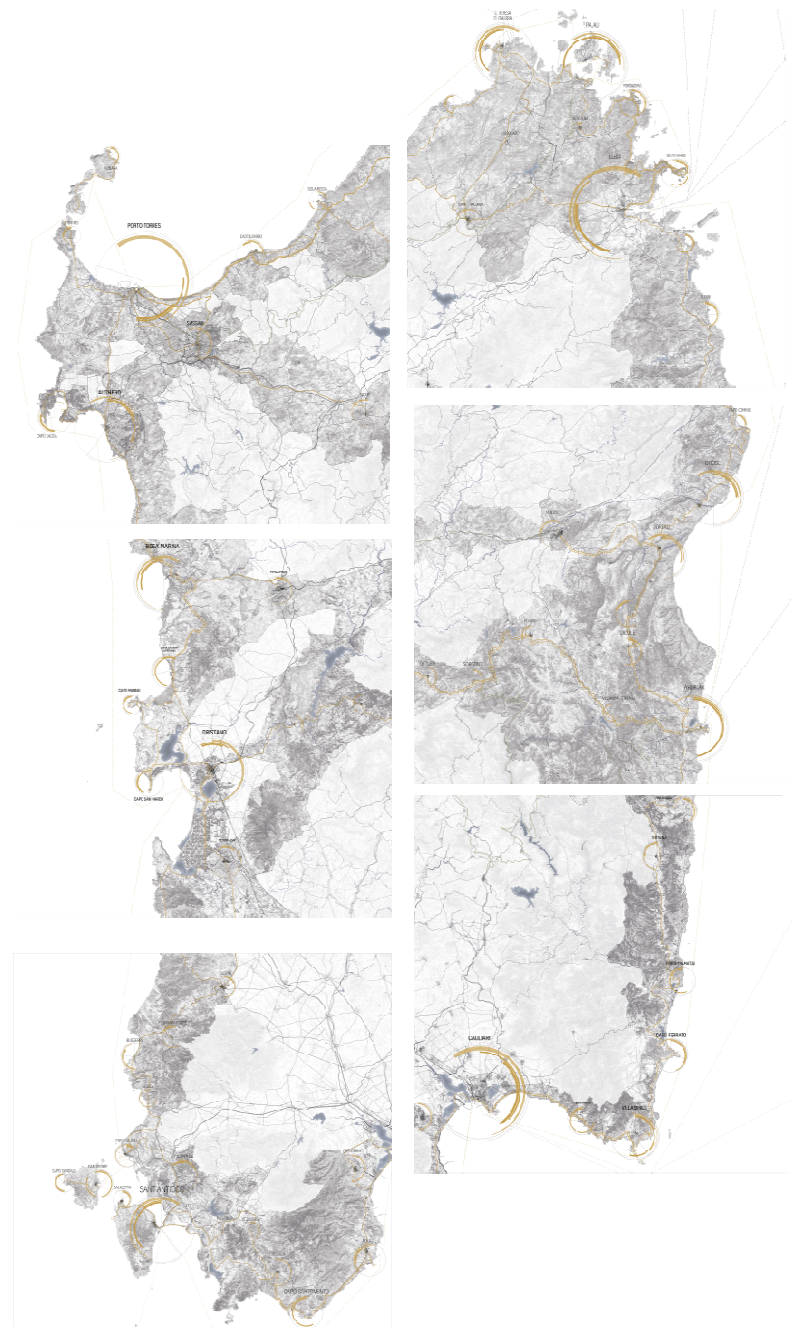
PUNTA SARDEGNA - PALAU



STAZIONE SEMAFORICA - SANTA TERESA DI GALLURA



PORTO CERVO



TIRRENIAN Lighthouses ROUTE

Graduate Workshop II - July 2017

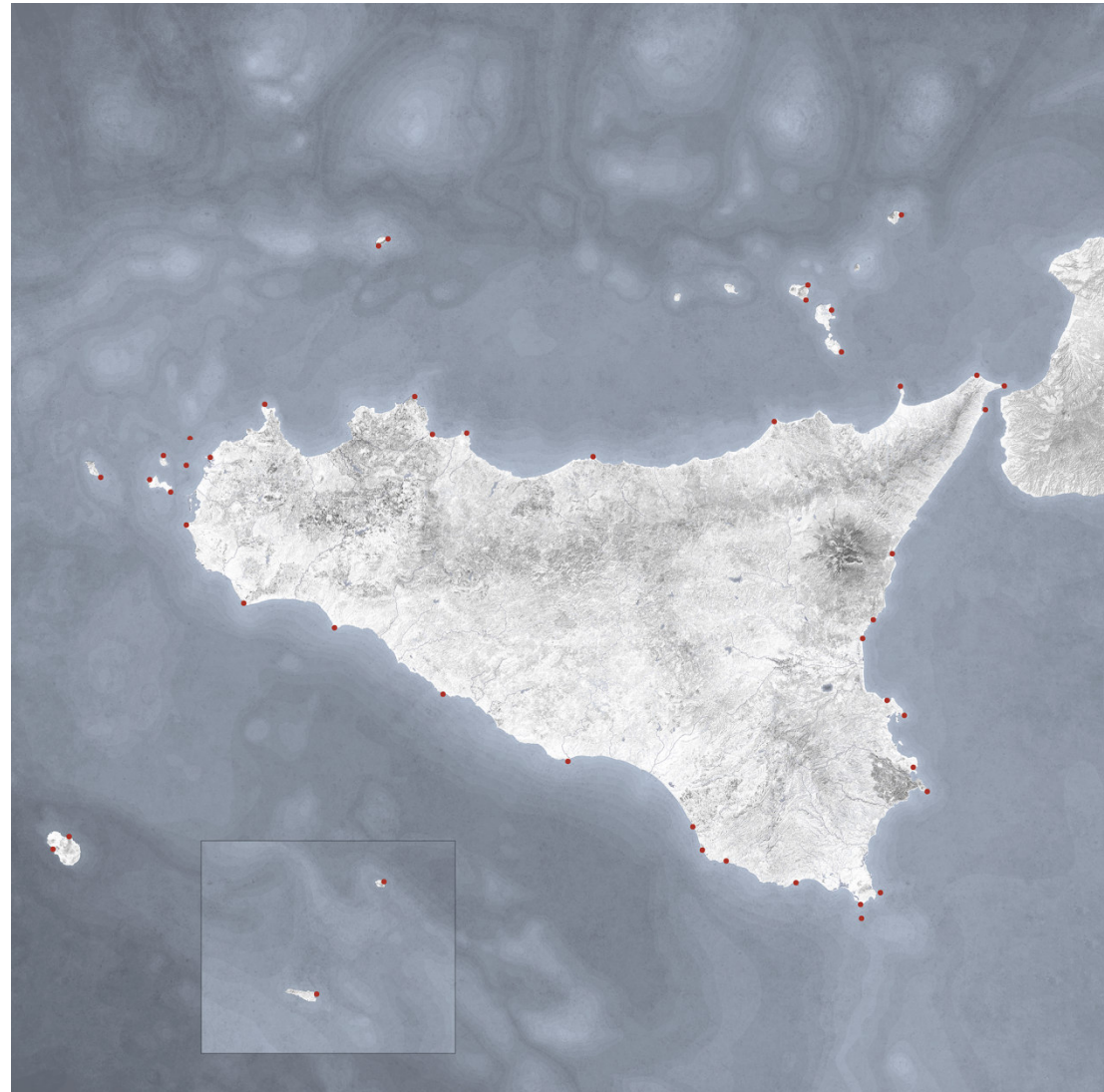
Capo d'Orso - Project



TIRRENIAN Lighthouses Route

Graduate Workshop III - March 2018

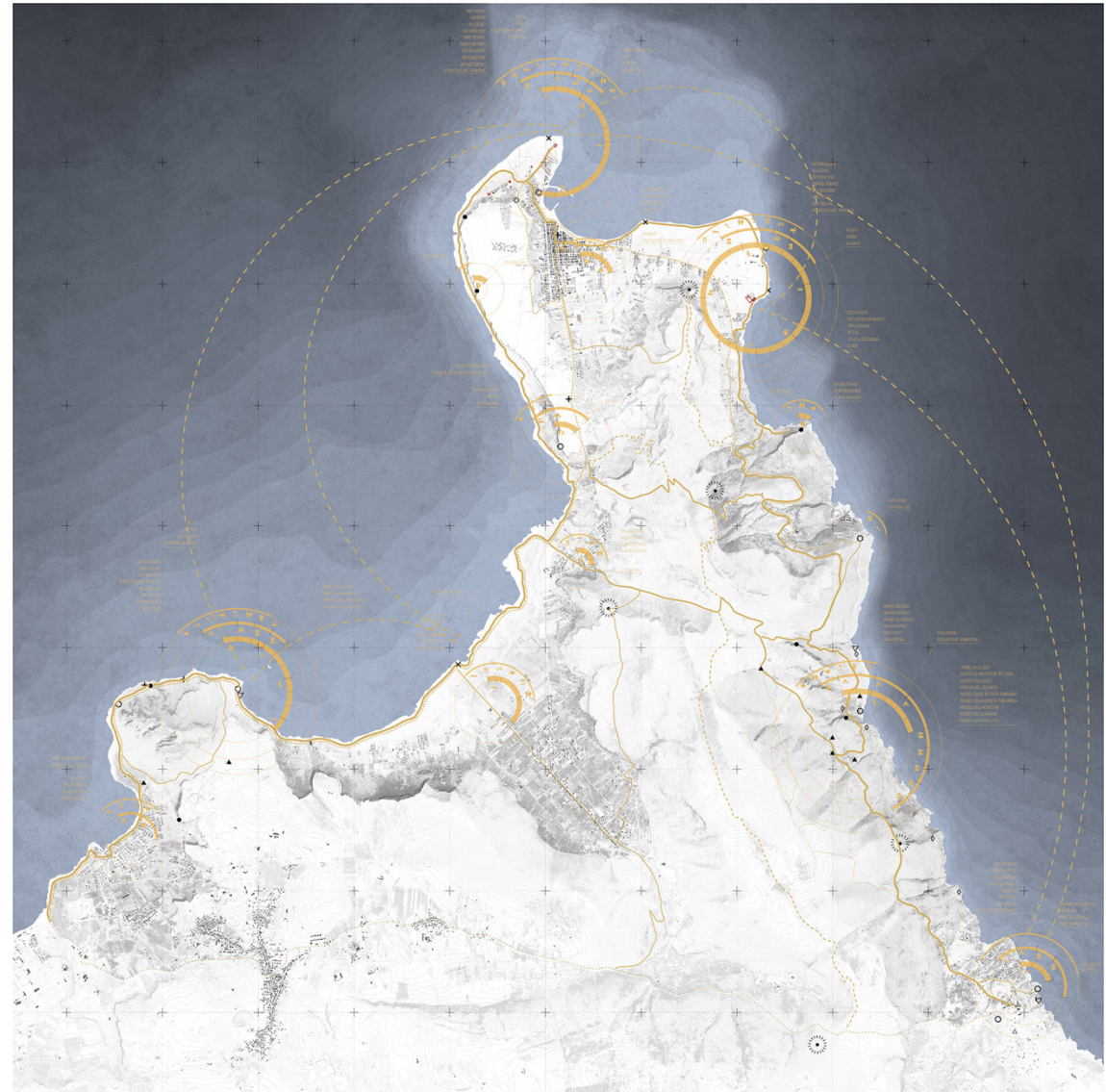
Sicily - Routes



TIRRENIAN Lighthouses ROUTE

Graduate Workshop III - March 2018

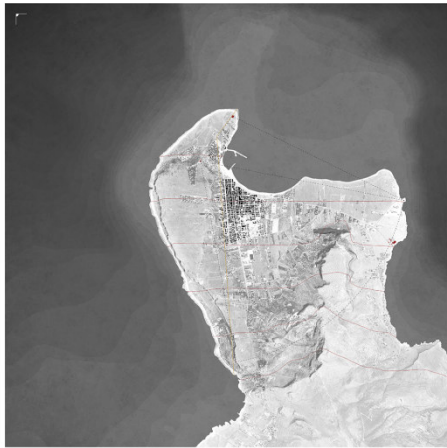
San Vito Lo Capo - Routes



TIRRENIAN LIGHTHOUSES ROUTE

Graduate Workshop III - March 2018

San Vito Lo Capo - landscape unit



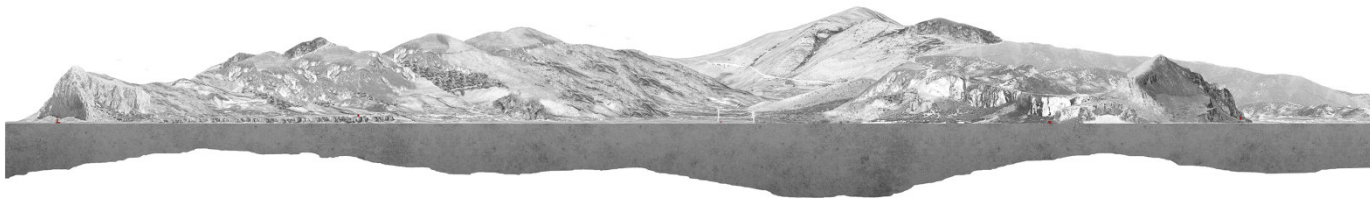
San Vito Lo Capo



Baia di Castelluzzo



San Vito Lo Capo



Editorial Series *The lighthouses of Adriatic Sea*

Adda Publisher Bari

first step

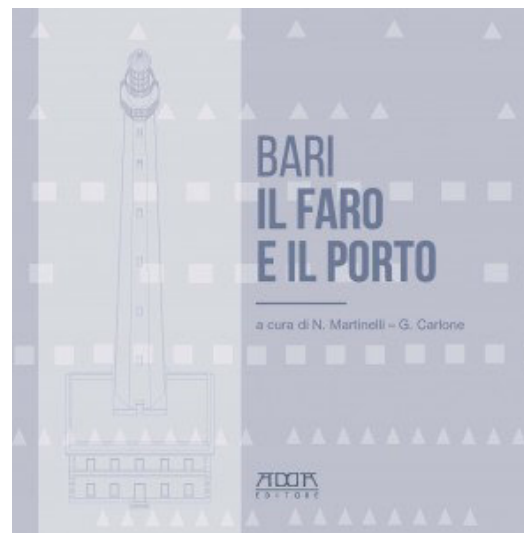
Leuca's Lighthouse

Bari's Lighthouse

Vasto's Lighthouse



July 2016



January 2017



October 2017

Editorial Series *The lighthouses of Adriatic Sea* Adda Publisher Bari second step

Taranto's Lighthouse
Manfredonia's Lighthouse



September 2018

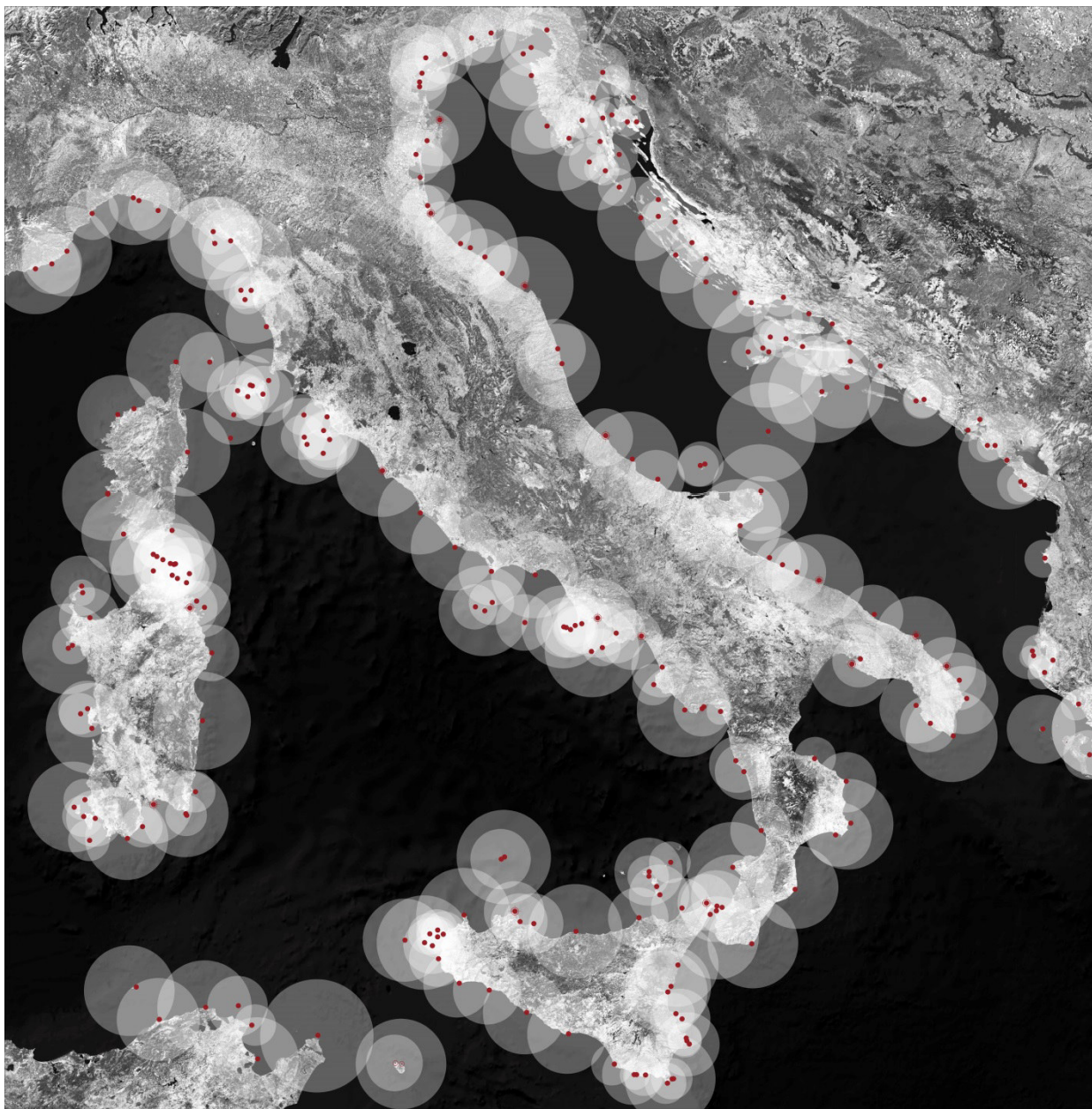


September 2018

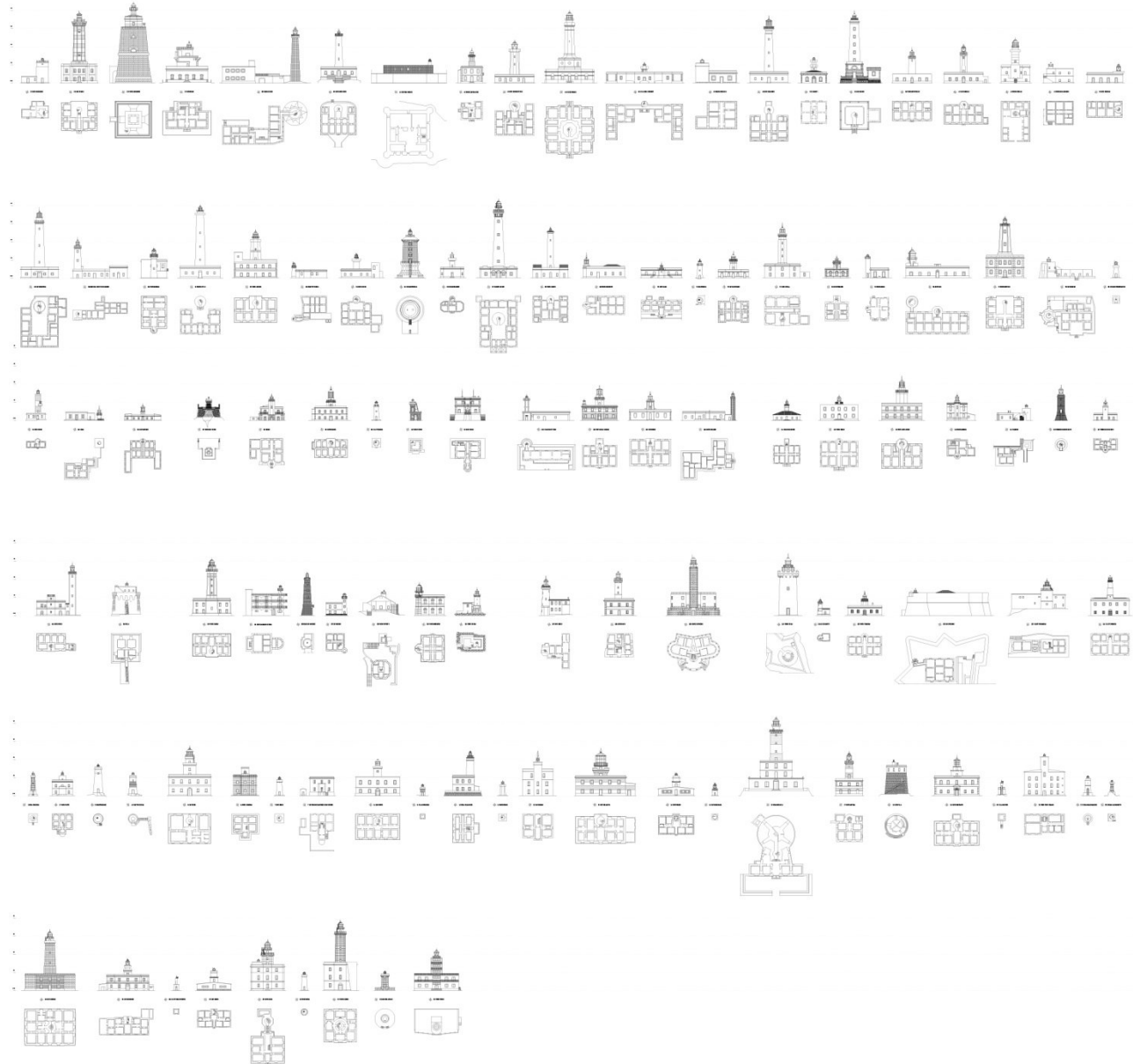


September 2020

ADRIATIC|TIRRENIAN LIGHTHOUSES



ADRIATIC|TIRRENIAN LIGHTHOUSES



FIRST NATIONAL CONFERENCE

for a route of the italian lighthouses



CONVEGNO NAZIONALE PER UN CAMMINO DEI FARI ITALIANI

VENERDÌ 28 SETTEMBRE 2018
SPAZIO 152 REGIONE PUGLIA
BARI, LUNGOMARE STARITA, 4
FIERA DEL LEVANTE

8.45 WELCOME COFFEE

9.00 INTRODUZIONI

Nicola Martelli
DIRETTORE GENERALE
Giuseppe Carbone
DIRETTORE REGIONALE
Aldo Platano
DIRETTORE REGIONALE
Dipartimento Turismo, Economia della Cultura e
Identificazione del territorio

SALUTI ISTITUZIONALI

Michela Emiliano
PRESIDENTE DELLA REGIONE PUGLIA
LORIANA CAPONE
DIRETTORE REGIONALE PUGLIA
Antonio De Caro
PRESIDENTE DELLA FIRES
Francesco Meroni
SINDACO DI BARI
Paolo Napolitano
PRESIDENTE DELLA SOCIETA' ITALIANA DI PAESAGGI, PIANIFICAZIONE E CONSERVAZIONE DEL TERRITORIO
Giorgio Rocco
DIRETTORE GENERALE DEL POLITECNICO DI BARI
Umberto Frattico
DIRETTORE GENERALE DEL POLITECNICO DI BARI

11.00 INTRODUZIONE AI TEMI

INTRODUCE E COORDINA

Enrica Simonetti
DIRETTORE GENERALE

INTERVENTI

Paolo Pisanelli
DIRETTORE GENERALE DEI BENI E DELLE ATTIVITA' CULTURALI E DEL TURISMO
Dionatale Calafà
DIRETTORE REGIONALE PUGLIA
Giancarlo Gambardella
DIRETTORE DEL NODO VALORIZZAZIONE E DIMENSIONI INNOVATIVE NEL RESTAURO
Gilio Caruso
MEMBER
Silvana Marotta
AGENZIA DEL DISTRETTO - DIRETTORE STRATEGIA INNOVABILITA' E INNOVAZIONE
Vincenzo Capobianco
AGENZIA DEL DISTRETTO - DIRETTORE REGIONE PUGLIA E BARI

TEMI DI RICERCA

INTRODUCE

Michela Martelli
DIRETTORE REGIONALE

MODERA

Mariella Arnesio
DIRETTORE REGIONALE

RETE DELLE UNIVERSITA' PER UN CAMMINO DEI FARI ITALIANI

INTRODUCE

Matteo Di Vito
UNIVERSITA' DEGLI STUDI DI TRIESTE - PADOVA, DIPARTIMENTO DI ARCHITETTURA

MODERA

Daniela Roscivello
UNIVERSITA' DEGLI STUDI DI PADOVA, DIPARTIMENTO DI ARCHITETTURA

INTERVENTI

Mariafrancesca Russo
UNIVERSITA' DEGLI STUDI DI TRIESTE - PADOVA, DIPARTIMENTO DI ARCHITETTURA, PIANIFICAZIONE E URBANISMO

MODERA

Michela Martelli
UNIVERSITA' DEGLI STUDI DI TRIESTE - PADOVA, DIPARTIMENTO DI ARCHITETTURA, PIANIFICAZIONE E URBANISMO

13.30 LIGHT LUNCH - EATALY

14.00 - 17.30 WORKSHOP TEMATICI

WORKSHOP 1

Dismissione, Riconversione, Valorizzazione,
come Ripensare l'Architettura dei Fari

MODERATORE

Antonella Iossa

DISCUSSANT

Giancarlo Gambardella, Michela Martelli

WORKSHOP 2

Architetture storiche e paesaggi culturali,
Fari, torri e monumenti costieri tra restauro,
valorizzazione e usi contemporanei

MODERATORE

Valentina Russo

DISCUSSANT

Riccardo Florio, Gabriele Rossi

WORKSHOP 3

Idee per un Cammino dei Fari Italiani

MODERATORE

Giovanna Mangalardi

DISCUSSANT

Aldo Platano, Antonio Messeri, Poltriccioni

INFORMAZIONI: FARI, ASSOCIATION/ITALY
FACEBOOK, PULSAR



PROCEEDINGS OF THE NATIONAL CONFERENCE

for a route of the italian lighthouses



Rete Nazionale delle università per un Cammino dei Fari Italiani

Atti del primo Convegno Nazionale per un Cammino dei Fari Italiani



Cammino dei Fari Italiani

Atti del Primo Convegno Nazionale
Bari - Fiera del Levante - 28 settembre 2018



ADDA
EDITORE

Gruppo di Lavoro per il Politecnico di Bari

Comitato scientifico:

- Michele Montemurro (responsabile Scientifico)
- Nicola Martinelli
- Gabriele Rossi
- Giuseppe Carlone

Collaboratori:

- Nicoletta de Rosa
- Nicola La Vitola
- Nicolò Montuori
- Giuseppe D'Agostino



CoHeN

Coastal Heritage Network



Interreg
Greece-Italy

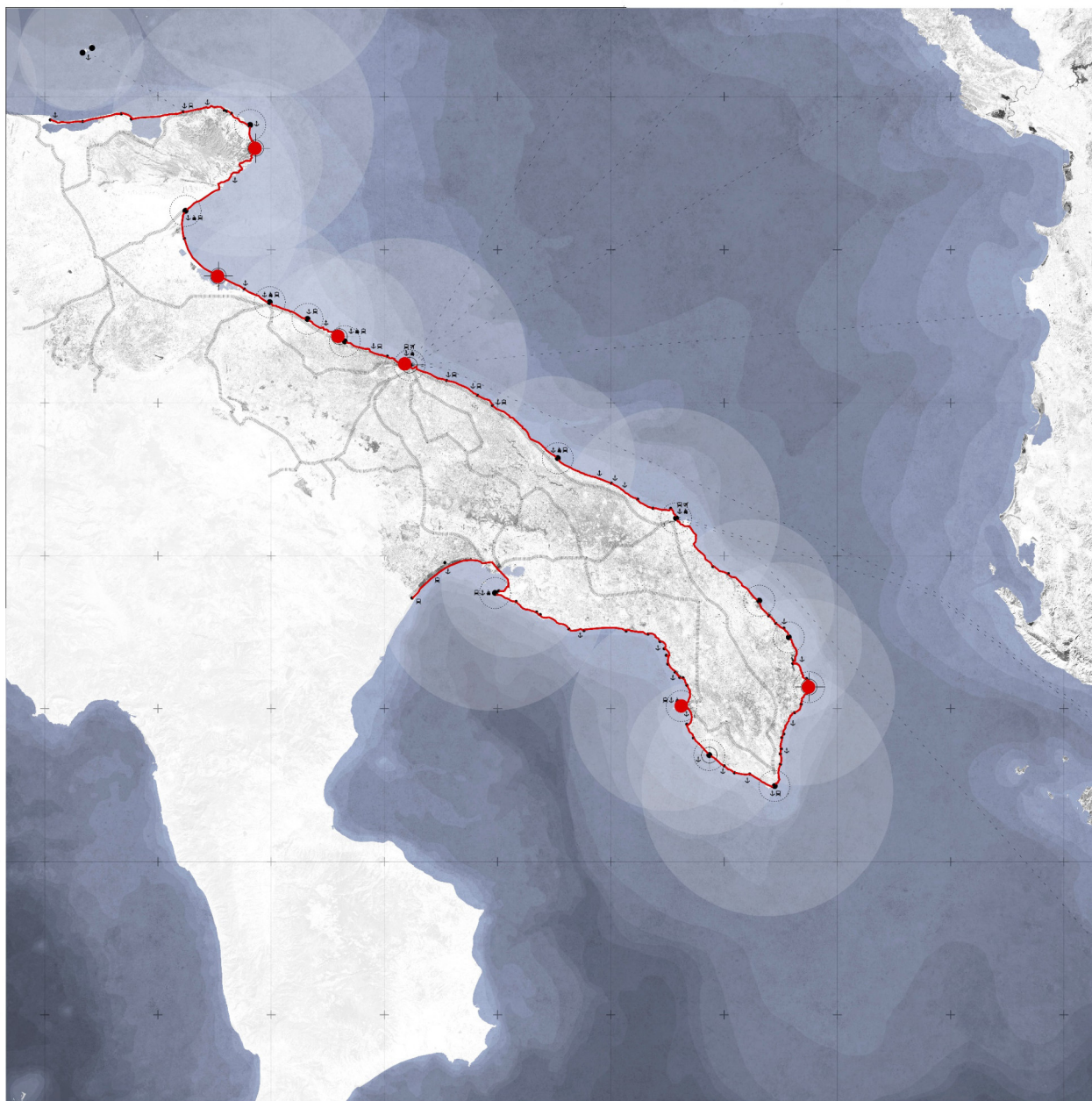


European Regional Development Fund

EUROPEAN UNION

I 6 Capisaldi del Percorso Costiero

- Torre Faro di San Giovanni
- Faro di Punta Palascia
- Faro di Punta San Cataldo
- Torre Calderina
- Torre Pietra
- Torre San Felice



PUGLIA

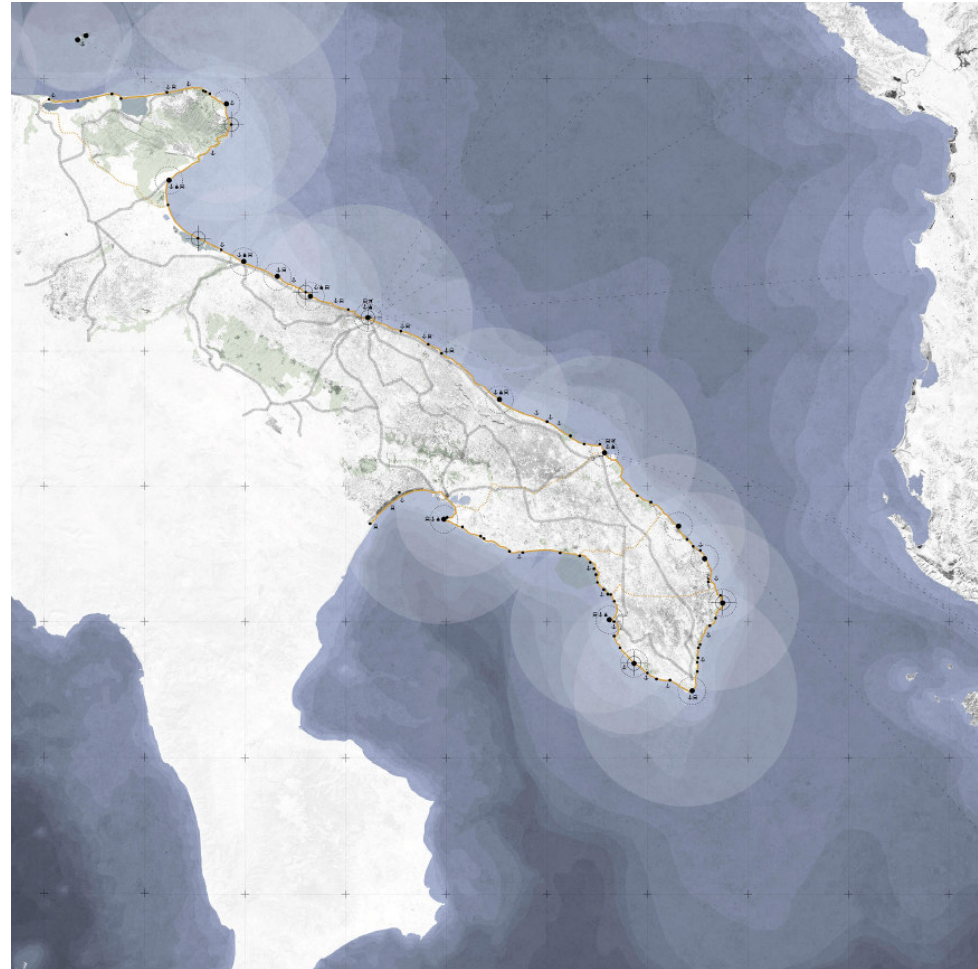
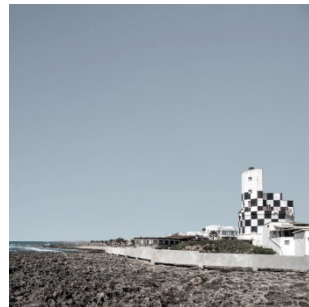
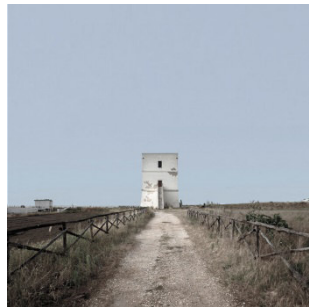
IL CAMMINO DEI FARI

0 10 20 40 60 80 100

LIGHTHOUSES AND COASTAL TOWERS OF PUGLIA

Adriatic-Ionian coastal route

Punta Palascia-San Cataldo- Torre San Felice-Torre Calderina-Torre Pietra- TorreFaro di San Giovanni

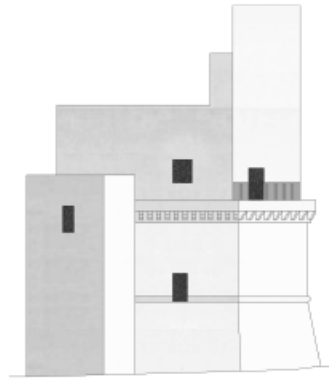




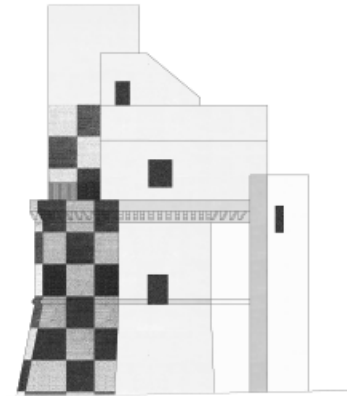
Torre Faro di San Giovanni



Planimetria +7,00 m



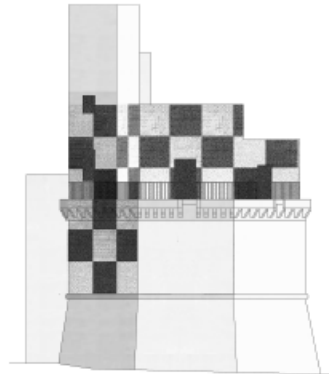
Prospetto Nord



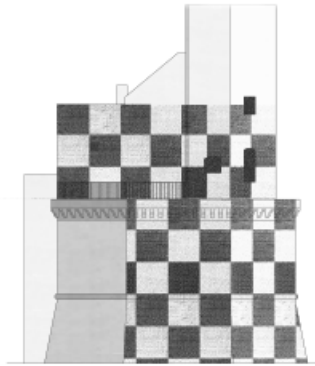
Prospetto Est



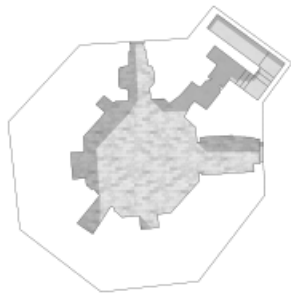
Planimetria +4,00 m



Prospetto Sud



Prospetto Ovest

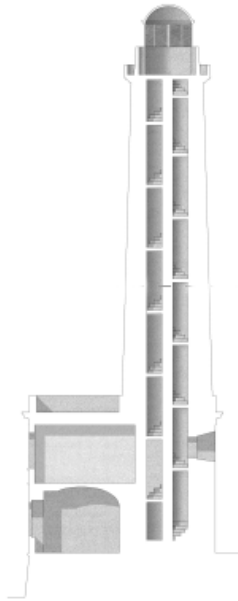


Planimetria -4,00 m

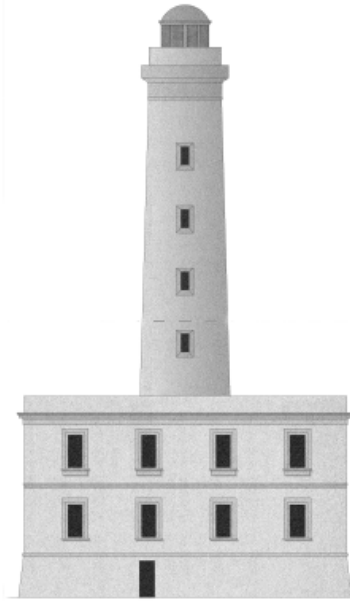




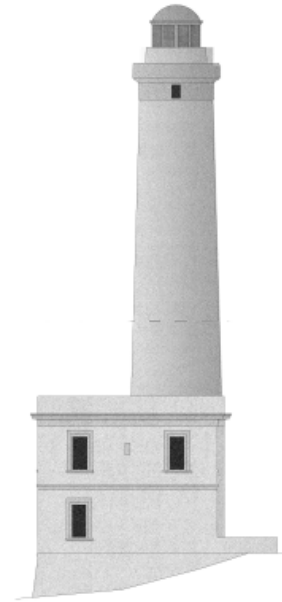
Faro di Punta Palascia



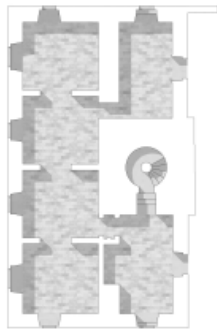
Sezione AA'



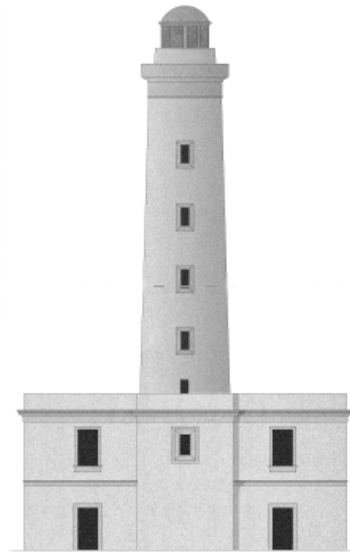
Prospetto EST



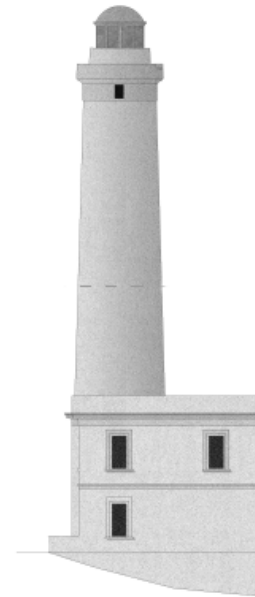
Prospetto Sud



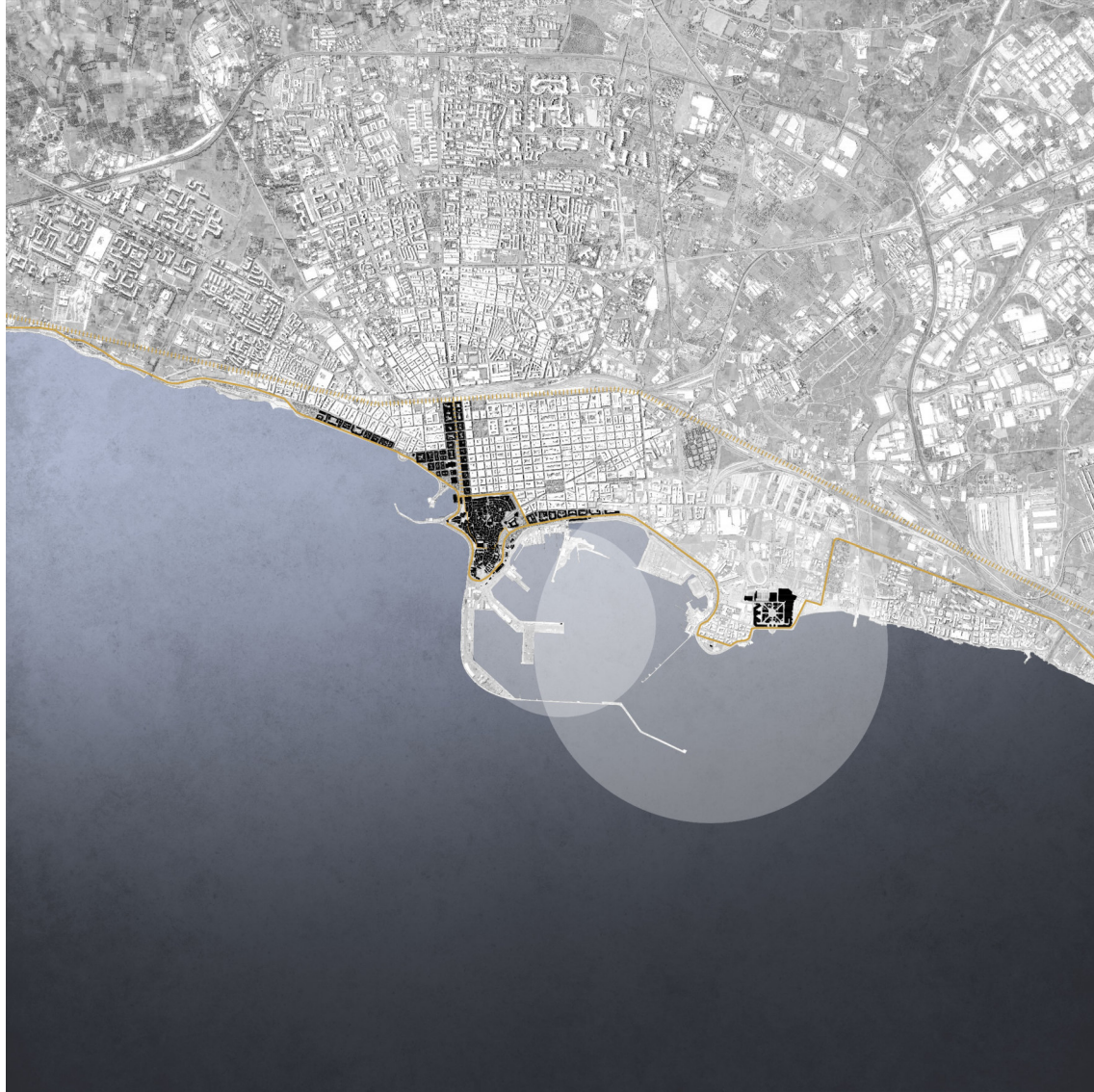
Planimetria +4,00 m



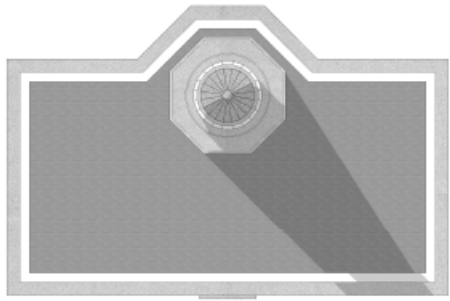
Prospetto Ovest



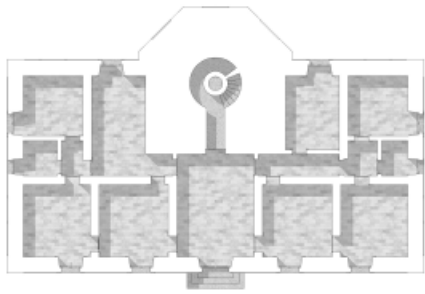
Prospetto Nord
scala 1:100



Faro di Punta San Cataldo



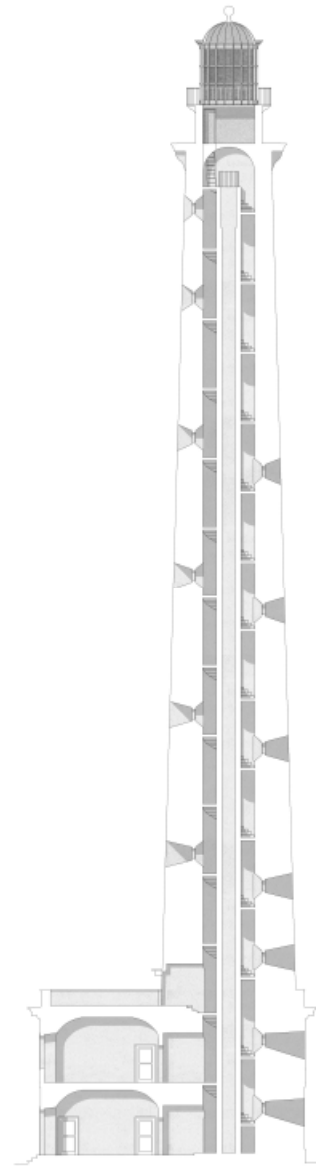
Planimetria +7,00 m



Planimetria +1,00 m

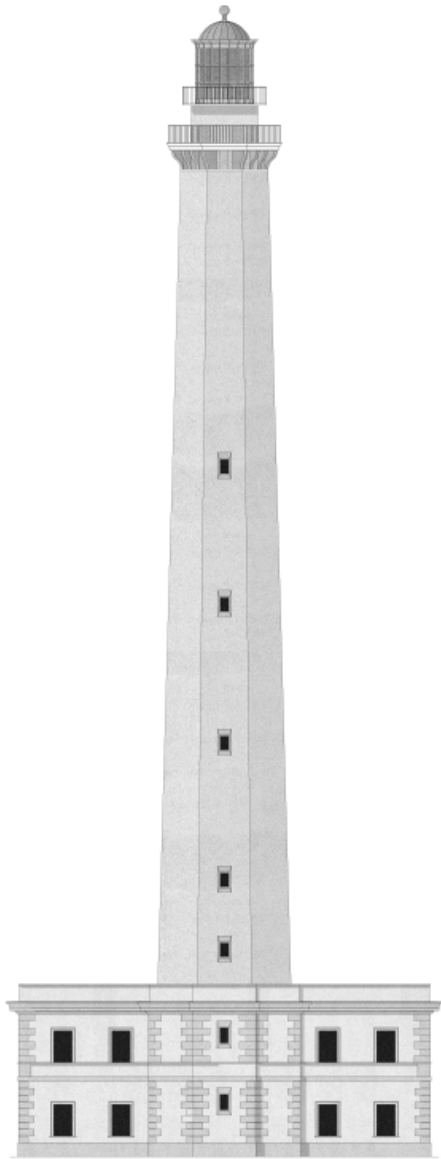


Prospetto Est / Ovest

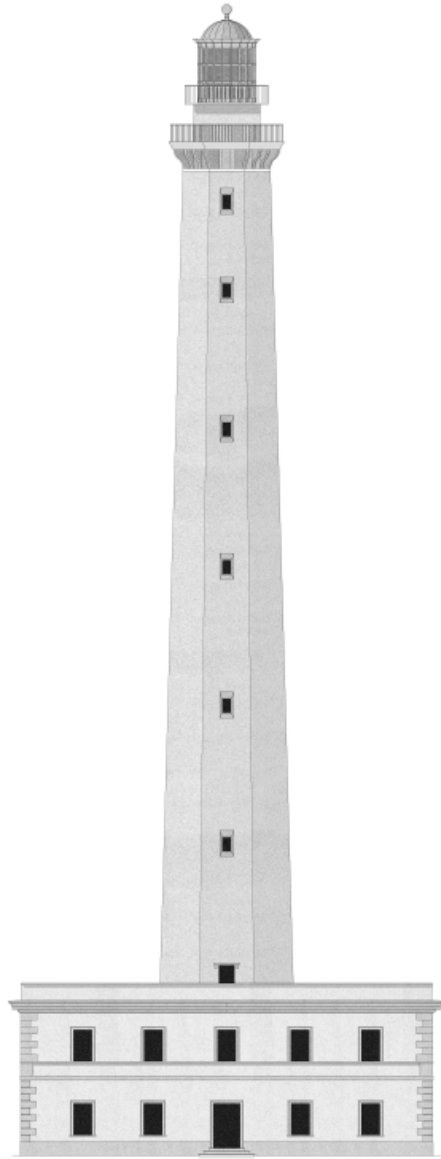


Sezione AA'

scala 1:100



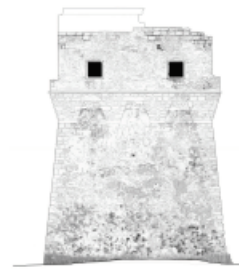
Prospetto Nord



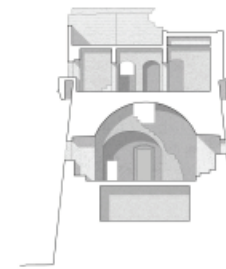
Prospetto Sud



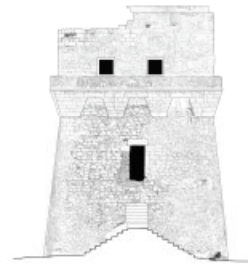
Torre Calderina



Prospetto Nord



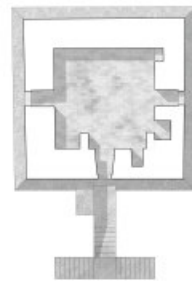
Sezione AA'



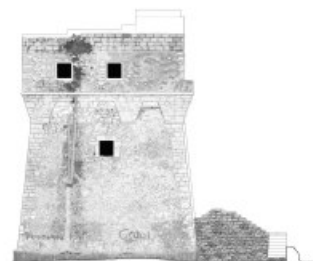
Prospetto Sud



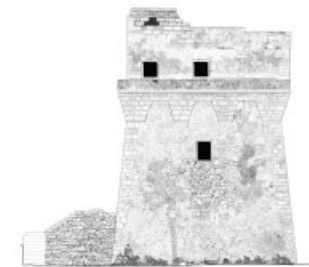
Sezione BB'



Planimetria +4,00 m



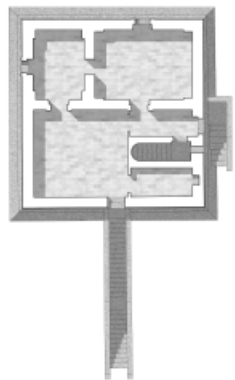
Prospetto Ovest



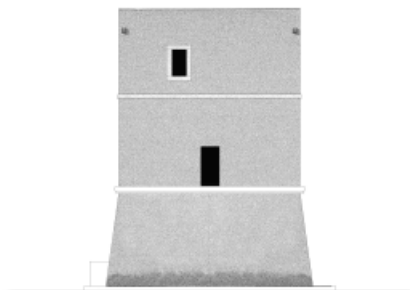
Prospetto Est
scala 1:100



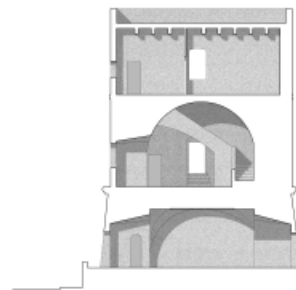
Torre Pietra



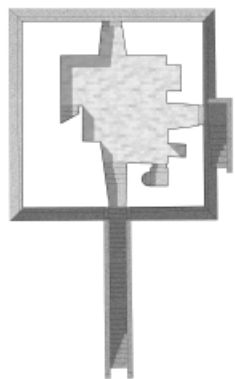
Planimetria +7,00 m



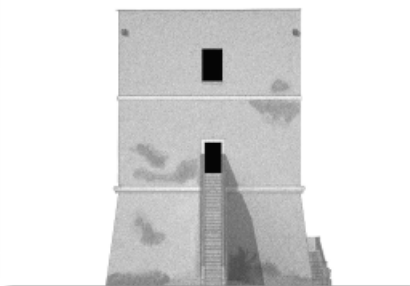
Prospetto Nord



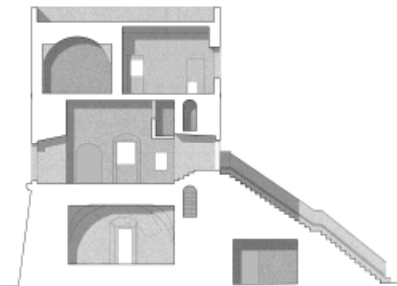
Sezione AA'



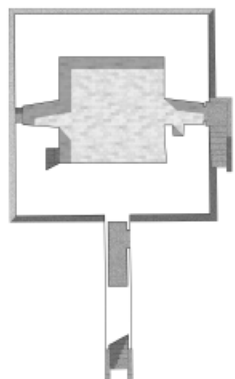
Planimetria +4,00 m



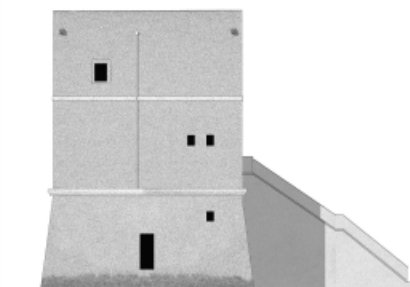
Prospetto Sud



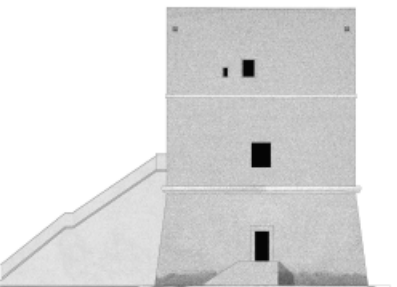
Sezione BB'



Planimetria +1,00 m



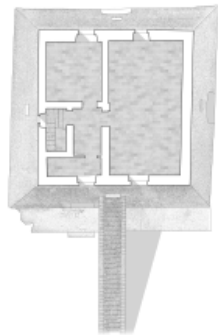
Prospetto Ovest



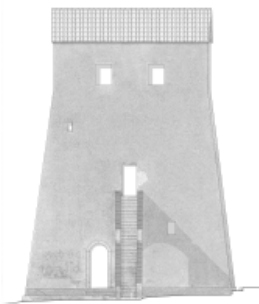
Prospetto Est



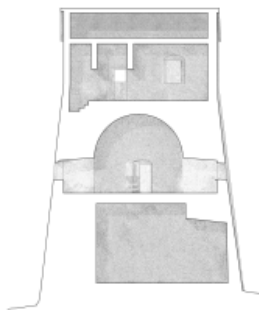
Torre San Felice



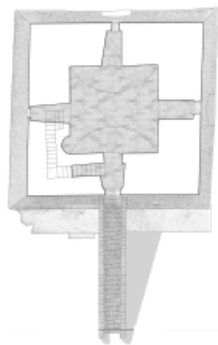
Planimetria +7,00 m



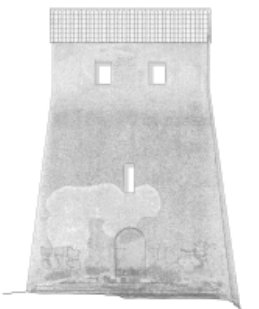
Prospetto Nord



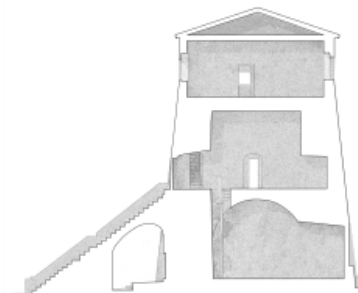
Sezione AA'



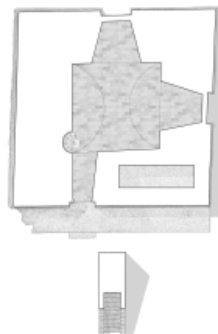
Planimetria +4,00 m



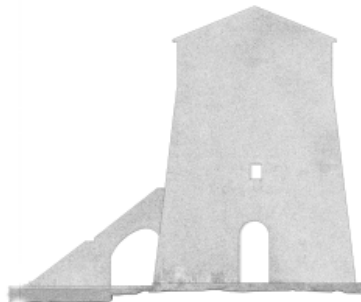
Prospetto Sud



Sezione BB'



Planimetria +4,00 m



Prospetto Est./Ovest

